

Loneliness Before and During the COVID-19 Pandemic: A Systematic Review with Meta-Analysis

Mareike Ernst¹, Daniel Niederer², Antonia M. Werner^{1,3}, Sara J. Czaja⁴, Christopher Mikton⁵,
Anthony D. Ong^{4,6}, Tony Rosen⁷, Elmar Brähler¹, and Manfred E. Beutel¹

¹ Department of Psychosomatic Medicine and Psychotherapy, University Medical Center of the
Johannes Gutenberg-University Mainz, Mainz, Germany

² Department of Sports Medicine and Exercise Physiology, Institute of Occupational, Social and
Environmental Medicine, Goethe University Frankfurt, Frankfurt, Germany

³ Department of Psychology, Goethe University Frankfurt, Frankfurt, Germany

⁴ Division of Geriatrics and Palliative Medicine, Weill Cornell Medicine, New York, New York, USA

⁵ Department of Social Determinants of Health, Division of Healthier Populations, World Health
Organization

⁶ Department of Psychology, Cornell University, Ithaca, New York, USA

⁷ Department of Emergency Medicine, Weill Cornell Medicine/New York-Presbyterian Hospital, New
York, New York, USA

Accepted for publication at *American Psychologist* on March 18, 2022 © 2022, American Psychological Association. This paper is not the copy of record and may not exactly replicate the final, authoritative version of the article. Please do not copy or cite without authors' permission. The final article will be available, upon publication, via its DOI: 10.1037/amp0001005.

In the meantime, please cite: Ernst, M., Werner, A. M., Niederer, D., Czaja, S. J., Mikton, C., Ong, A. D., Rosen, T., Brähler, E., & Beutel, M. E. (in press). Loneliness before and after the outbreak of the COVID-19 pandemic: A systematic review with meta-analysis. *American Psychologist*.

Author Contributions: ME, SJC, CM, ADO, TR, EB, MEB conceptualized the study. ME, DN, and AMW coded the data. DN analyzed the data. All authors wrote the manuscript and contributed to quality check the data and analyses.

Acknowledgments: We thank Lorena Cascant Ortolano, librarian at the departmental library of the University Medical Center Mainz, for her help in designing the search strategy. Mareike Ernst is funded by a grant from the MZPG CONNECT Early Career Program of the Mainz Research Center for Mental Health. Tony Rosen's participation has been supported by a Paul B. Beeson Emerging Leaders Career Development Award in Aging from the National Institute on Aging (K76 AG054866).

Open Science: All data and code are available via the Open Science Framework: osf.io/fp732

Correspondence concerning this article should be addressed to Mareike Ernst, Department of Psychosomatic Medicine and Psychotherapy, University Medical Center of the Johannes Gutenberg-University Mainz, Untere Zahlbacher Str. 8, 55131 Mainz, Germany. Email: Mareike.Ernst@unimedizin-mainz.de

Abstract

The COVID-19 pandemic and measures aimed at its mitigation, such as physical distancing, have been discussed as risk factors for loneliness, which increases the risk of premature mortality and mental and physical health conditions. To ascertain whether loneliness has increased since the start of the pandemic, this study aimed to narratively and statistically synthesize relevant high-quality primary studies. This systematic review with meta-analysis was registered at PROSPERO (ID CRD42021246771). Searched databases were PubMed, PsycINFO, Cochrane Library/Central Register of Controlled Trials/EMBASE/CINAHL, Web of Science, the WHO COVID-19 Database, supplemented by Google Scholar and citation searching (cutoff date of the systematic search 05/12/2021). Summary data from prospective research including loneliness assessments before and during the pandemic were extracted. Of 6,850 retrieved records, 34 studies (23 longitudinal, 9 pseudo-longitudinal, 2 reporting both designs) on 215,026 participants were included. Risk of bias (RoB) was estimated using the ROBINS-I tool. Standardized mean differences (SMD, Hedges' g) for continuous loneliness values and logOR for loneliness prevalence rates were calculated as pooled effect size estimators in random-effects meta-analyses. Pooling studies with longitudinal designs only (overall $N=45,734$), loneliness scores (19 studies, $SMD=0.27$ [95% confidence interval=0.14-0.40], $Z=4.02$, $p<.001$, $I^2=98\%$) and prevalence rates (8 studies, $\log OR=0.33$ [0.04-0.62], $Z=2.25$, $p=.02$, $I^2=96\%$) increased relative to pre-pandemic times with small effect sizes. Results were robust with respect to studies' overall RoB, pseudo-longitudinal designs, timing of pre-pandemic assessments, and clinical populations. The heterogeneity of effects indicates a need to further investigate risk and protective factors as the pandemic progresses to inform targeted interventions.

Keywords: COVID-19; loneliness; mental health; pandemic; social isolation

Public significance statement

This synthesis of international research with a focus on longitudinal study designs shows small, but robust increases in loneliness during the COVID-19 pandemic across gender and age groups. As loneliness jeopardizes mental and physical health, these findings indicate that public health responses to the continuing pandemic should include monitoring of feelings of social connectedness and further research into risk and protective factors.

Loneliness Before and During the COVID-19 Pandemic:

A Systematic Review with Meta-Analysis

Even before the COVID-19 pandemic, social isolation and loneliness were becoming major public health and policy concerns, largely due to their serious impact on longevity, mental and physical health, and well-being (Fried et al., 2020; Holt-Lunstad et al., 2015; Leigh-Hunt et al., 2017). The pandemic and the attendant measures to contain it have made the issues of social isolation and loneliness even more salient (Gruber et al., 2021; Holt-Lunstad, 2021). Since its outbreak, many countries around the world have enacted shelter-in-place and physical distancing orders, travel bans, and switched to remote work and education resulting in fewer social contacts (i.e., greater social isolation), which may in turn have increased loneliness. Social isolation and loneliness, though related, are distinct concepts: “Social isolation” is the objective state of having a small network of kin and non-kin relationships and thus few or infrequent interactions with others. Some studies have found only weak correlations between social isolation and loneliness (Steptoe et al., 2013; Tanskanen & Anttila, 2016): socially isolated people are not necessarily lonely (in fact, *solitude* describes a positive valuation) and vice versa. By contrast, “loneliness” is the painful feeling – or “social pain” – that results from a discrepancy between the quantity (e.g., number of social contacts per day) and/or the quality (referring to the subjective experience of characteristics such as affection, intimacy, or conflict) of their desired and actual social connections (Cacioppo et al., 2014; Perlman & Peplau, 1981).

In the pandemic context, the distinction between social isolation and loneliness is especially important as many people have fewer contacts, but not all of them feel lonely. This is because loneliness is related to factors other than social isolation, including temporally stable characteristics of the individual (Mund et al., 2020) and their environment such as personality traits, need for contact and expectations of relationships (Qualter et al., 2015), physical and mental health, and cultural norms (Gierveld et al., 2018; Lim et al., 2020). These variables can explain why the pandemic does not affect everyone similarly. For instance, an investigation of the German population showed that extraverted individuals reported greater increases in loneliness during the pandemic (Entringer & Gosling, 2021).

However, it remains unclear whether loneliness has increased *overall* since the pandemic started (e.g., Killgore et al., 2020; Sutin et al., 2020). Studies have reported stable (Peng & Roth, 2021; Sibley et al., 2020), as well as increases (Kovacs et al., 2021; Macdonald & Hülür, 2021) and decreases (Bartrés-Faz et al., 2021) in loneliness levels. Beyond a potential impact of the duration of restrictions (Bartrés-Faz et al., 2021), sample- and design-specific effects may account for these heterogeneous findings. A 2021 systematic review and meta-analysis of changes in mental health, focusing on longitudinal studies and natural experiments with pre-pandemic comparisons, found no evidence of increase in loneliness (based on three studies) (Prati & Mancini, 2021). A more recent systematic review, which included neither a meta-analysis nor a meta-regression (Buecker & Horstmann, 2021), found that longitudinal studies mainly reported increases in loneliness.

The present study aims to shed light on the question of whether there were changes in loneliness in the context of the COVID-19 pandemic by updating the evidence and combining a systematic review with a meta-analysis of high-quality studies. The systematic review includes studies with longitudinal (prospective studies repeatedly assessing the same sample) or pseudo-longitudinal design (cross-sectional surveys of different samples, using the same measures) which include a pre-pandemic assessment. The meta-analysis pools longitudinal studies only. Regarding types of assessment, the focus was on loneliness defined as a painful subjective feeling. The primary aim of the study was to ascertain whether overall levels and prevalence rates of loneliness changed since the start of the pandemic. The secondary aim was to explore statistical predictors of the change in a meta-regression, including study-level variables such as design, sample mean age, gender distribution, and risk of bias. The study protocol was registered before conducting the search.

Methods

Search Strategy and Inclusion and Exclusion Criteria

Throughout the systematic review, the latest PRISMA guidelines were followed (Page et al., 2021). Articles had to fulfill the following inclusion criteria: 1) address the current SARS-CoV-2/COVID-19 pandemic, 2) report participants' responses on loneliness measures, and 3) contain at least one pre-pandemic assessment (cut-offs for regional onset were 12/2019 for Asia and Oceania,

01/2020 for North America, Europe, and Africa, and 02/2020 for South America) and one assessment during the pandemic. Only longitudinal and pseudo-longitudinal designs were included. Studies using retrospective assessments (e.g., participant-reported changes in loneliness since the start of lockdown), studies published before 2019, non-full-text articles, articles not reporting original research, and articles in languages other than German, English, Spanish, French, Italian, or Chinese were excluded. No further restrictions were placed on the setting, target population, and study design.

Information Sources

The following electronic databases were searched: PubMed, PsycINFO, the Cochrane Library/Cochrane Central Register of Controlled Trials, Web of Science, and the COVID-19 Database of the World Health Organization (WHO) (comprising also PubMed and PsycINFO plus Elsevier, a gray literature database, ICTRP, LILACS, Medline, and the Preprint-Servers BioRxiv and MedRxiv, Scielo, and SSRN). The search terms are included in Suppl. Material I. The COVID-19 part of the search strategy was adapted from that developed by the working group for evidence-based medicine within the German working group for medical librarianship (Arbeitsgemeinschaft für medizinisches Bibliothekswesen e.V.). The search was supplemented by other sources (citation searching, Google Scholar, websites of governments/organizations such as the USA's National Institutes of Health, UK's National Institute for Health Research, and German Institute for Economic Research).

Study Selection

Articles that did not fit the inclusion criteria were excluded after screening abstract and title. The remaining relevant full-text records were screened for eligibility. This step was conducted independently by four members of the research group (postdoctoral/senior researchers with previous experience conducting reviews and/or meta-analyses, three psychologists (two full professors) and one medical doctor (assistant professor)). Discrepancies were resolved through discussion. Senior researchers (mathematician and medical doctor/psychologist, full professors) verified the eligibility of included studies.

Data Collection

The following information was extracted by the same four members of the research group: (1) authors; (2) year of publication; (3) country/region; (4) study type (longitudinal/pseudo-longitudinal);

(5) participants' age; (6) gender/sex proportions; (7) type of study population (e.g., general or clinical population, including both individuals with mental health and physical health conditions); (8) measure to assess of loneliness; (9) unadjusted levels of loneliness (M , SD) and/or proportions of lonely participants (N , %) including cut-offs for dichotomized data; (10) factors associated with changes in loneliness; (11) restriction measures and duration of restriction measures at the time the assessment of loneliness was conducted during the pandemic; (12) time between pre- and during-pandemic assessment; and (13) sample size (for pre-pandemic and during-pandemic assessment). When information about restrictions at the time of assessment was insufficient, further information was sought online. When information on the main outcome was insufficient, the authors of the studies were contacted for additional information. There were six such cases in all of which additional information was provided.

Methods for Assessing Risk to Internal Validity/Risk of Bias

Bias domains included in the ROBINS-I tool (*Cochrane Handbook for Systematic Reviews of Interventions* version 6.2, 2021, Chapter 25, section 4) were used. Risk of bias (RoB) was rated with regard to confounding, selection of participants, classification of interventions (for this study: clarity regarding time of assessment, extent of restrictions), deviation from intended intervention (for this study: adherence to restrictions), missing data, measurement of outcomes, and selection of reported result/effect estimate. For each study and domain, the RoB was independently rated by two authors as “low”, “moderate” or “serious”. Their assessments were merged. For use in sensitivity analyses and meta-regression, an overall RoB rating was constructed (≥ 1 “serious” rating in any domain resulted in a “serious” overall RoB; overall “low” RoB was only present when all domains were rated “low” risk; otherwise, overall risk was considered “moderate”). RoB across studies was estimated by funnel plots/graphs, both using the standard error of the observed outcomes as predictors. Tests of potential funnel plot asymmetry were performed using Egger's regression and Begg and Mazumdar rank correlation for continuous outcomes and using Kendall's Tau rank correlation test for dichotomous outcomes. The R-based program jamovi (The jamovi project (2021), Version 1.0.7.0) was used for funnel plotting and funnel plot skewness estimation analyses.

Summary Measures/Methods of Synthesis

For all data pooling, random-effects meta-analyses were modelled. The main analyses included only original studies with longitudinal designs. For interval- or pseudo-interval-scaled outcomes (continuous loneliness scores), weighted standardized mean differences (Hedges' g) were used as effect size estimators. For binary outcomes (prevalence of loneliness), logarithmized odds ratios were calculated and used for data pooling. Effect sizes were interpreted following Cohen (1992), i.e., $d = 0.2$ is generally considered a small, $d = 0.5$ a medium, and $d = 0.8$ a large effect. For both pooling analyses, mean effect sizes and their 95% confidence intervals (CIs) were calculated; summary estimates were displayed using Forest plots. To ascertain the results' robustness, a series of sensitivity analyses were performed (1) including only studies with no 'serious' or 'critical' overall RoB rating, (2) combining longitudinal and pseudo-longitudinal study designs, (3) incorporating pre-pandemic assessments that overlapped with the date cut-offs specified above, and (4) excluding clinical populations. This was done for continuous data using the same methodological approach for data pooling as for the main analyses.

For all effect calculations, values from the pre-pandemic assessment were contrasted with assessments obtained during the pandemic. To test for overall effects, Z-statistics at a 5% alpha-error-probability level were calculated for all quantitative comparisons. Between-effects heterogeneity was assessed using restricted maximum-likelihood I^2 - and Tau^2 -statistics. To detect outliers at the study level, studentized residuals and Cook's distances were used. Outliers were Bonferroni corrected with two-sided alpha threshold = 0.05. Analyses were performed using the MAJOR package for jamovi.

Due to considerable between-effects heterogeneity, an exploratory meta-regression was modelled. Independent variables included: (1) the duration of restrictions when the assessment was conducted [days], (2) age (mean) [decades], (3) time between the two assessments [months], (4) sex/gender (% women), (5) sample type (0 = no clinical sample, 1 = clinical sample), (6) study type (0 = longitudinal, 1 = pseudo-longitudinal), (7) assessment of loneliness (0 = validated scale, 1 = author-developed item(s)), (8) studies' overall RoB (0 = moderate, 1 = serious), and (9) extent of restrictions at time of assessment (0 = soft, 1 = hard). The latter categories were defined in line with previous research (e.g., Plümper & Neumayer, 2020) (soft restrictions: recommendations, ongoing provision of non-essential services while prohibitions of larger gatherings can apply; hard restrictions: stay-at-

home orders with few exceptions, provision of essential services only). If restrictions had changed over the course of the study assessment and/or differed between regions, those most characteristic of study period and region (i.e., implemented in most places most of the time) were considered. The dependent variable was the effect size for loneliness (continuous). If both a longitudinal and a pseudo-longitudinal design were reported, data from the former was used. For the regression model, a syntax for IBM SPSS was used (David B. Wilson; Meta-Analysis Modified Weighted Multiple Regression; MATRIX procedure Version 2005.05.23). Inverse variance-weighted random intercepts and fixed slopes regression models were calculated. Homogeneity analysis (Q and p-values), meta-regression estimates (95% confidence intervals and p-values), and Z-statistics were calculated. The regression used backward selection of predictors (regressors with the highest significance levels were removed from the model in a stepwise way unless their removal implied a decrease of >10% in explained variance; backward selection was terminated once only statistically significant regressors remained in the model or a relevant increase in heterogeneity was observed (i.e., nonsignificant Cochrane's Q)). Underlying data and code are available via the Open Science Framework: osf.io/fp732

Results

Study Selection

The flowchart in Figure 1 displays the search and selection process. The initial search resulted in 6,850 records through database and register searching (WHO COVID-19 Database = 3,116, PubMed/MEDLINE = 1,779, PsycInfo = 369, Web of Science = 1,201, Cochrane Library/Central Register of Controlled Trials = 385). Duplicate records were removed following several steps as suggested by Bramer et al. (2016). Steps 1 and 2 were conducted automatically with Endnote X9.3.1; for the next steps, one author manually checked for duplicate records. After removal of duplicates ($n = 3,094$), and records not matching all inclusion criteria or fulfilling exclusion criteria, respectively, in title and abstract screening ($n = 3,672$), full texts of 84 remaining records were assessed for eligibility. There were three studies for which the author group at first arrived at different ratings, equaling an agreement of 96.4% before discussion. Fifty-six studies were excluded due to inadequate measurement ($n = 17$) (e.g., assessment of social withdrawal instead of loneliness), because there was

only one loneliness assessment ($n = 13$), and/or because the earliest available assessment had been conducted after the regional onset of the pandemic ($n = 26$) (for some studies, multiple reasons applied, see Suppl. Material II). Four studies' "pre-pandemic" assessment overlapped with the cut-offs (their details are included in Suppl. Material IV). The two longitudinal studies reporting continuous values were included in sensitivity analyses. Peer-reviewed articles were supplemented by additional studies identified via other methods aimed at detecting relevant gray literature, leading to the inclusion of four more publications. Following continuous screening during the revision process, we later added two more studies published after the initial search to include the most recent, relevant research. In total, 34 articles met the eligibility criteria. Two studies could not be included in the meta-analyses: Lippke et al. (2021) due to the use of different instruments assessing loneliness before and during the pandemic and Entringer et al. (2020) because the study reported on a sample that was analyzed and expanded in another publication (Entringer & Gosling, 2021) which we included instead.

Study Characteristics of Included Studies

Table 1 provides a summary of the main information extracted from the 34 eligible articles, totaling 215,026 participants. Most investigations were conducted in central/western Europe ($n = 23$) or the USA and Canada ($n = 8$). There were more longitudinal ($n = 23$) than pseudo-longitudinal studies ($n = 9$). Two articles reported both. Many investigated the general population, with $n = 13$ focusing on middle-aged and/or older adults and $n = 6$ on younger people (e.g., adolescents, university students). Specific populations sampled included individuals with cancer or other chronic health conditions ($n = 2$), caregivers ($n = 1$), male participants of a well-being intervention ($n = 1$), or individuals with mental disorders ($n = 1$).

The most commonly used questionnaires assessing loneliness were the 20-item UCLA loneliness scale (Russell et al., 1980) or its short forms ($n = 18$), especially the 3-item version (Hughes et al., 2004), followed by the 6-item de Jong-Gierveld loneliness scale ($n = 6$) (Gierveld & Tilburg, 2006). Six studies used self-created items or adaptations of other measures (PANAS, CES-D). Of the studies reporting comparisons of loneliness pre- and during-pandemic, only one reported an overall decrease, 18 reported an overall increase, and eight reported no change. In two cases, changes

depended on the coding of the outcome (continuous vs. binary, Herrera et al., 2021) or applied only to one aspect of loneliness (i.e., of the de Jong-Gierveld scale, van der Velden et al., 2021).

Increases in loneliness were found both in younger participant groups, such as students (Beutel et al., 2021; Elmer et al., 2020; Entringer & Gosling, 2021; Rogers et al., 2021) and in older participant groups, such as community cohorts of senior citizens (Heidinger & Richter, 2020; Krendl & Perry, 2021; Wong et al., 2020). Within samples, both lower age (Bu et al., 2020; Entringer et al., 2020; Niedzwiedz et al., 2021) and higher age (Bierman & Schieman, 2020) were identified as risk factors. Other variables associated with changes in loneliness included participants' living situation or relationship status, gender, and mental health. Women were more likely to report increases in loneliness than men (Entringer & Gosling, 2021; Entringer et al., 2020; Niedzwiedz et al., 2021; Philpot et al., 2021; Wong et al., 2020). Those who lived alone (Bartrés-Faz et al., 2021; Heidinger & Richter, 2020; Huxhold & Tesch-Römer, 2021; McGrath et al., 2020; Okely et al., 2020; Stolz et al., 2021; Wong et al., 2020) and/or were single during the pandemic (Huxhold & Tesch-Römer, 2021; Stone, 2020) were particularly at risk for higher levels of loneliness compared to pre-pandemic assessments. Lastly, increased loneliness was associated with mental disorders (Pan et al., 2021) and distress, e.g., anxiety and depression symptoms (Bierman & Schieman, 2020; Gallagher et al., 2020; Gallagher & Wetherell, 2020; Herrera et al., 2021; Kivi et al., 2021; Okely et al., 2020; van der Velden et al., 2021).

Results of Individual Studies and Meta-Analysis

The main pooled effect estimates for the primary outcome of loneliness, based on longitudinal studies only, are displayed in Figure 2 (continuous data) and Figure 3 (prevalence rates). Together, these analyses included 45,734 participants from four continents. The during-pandemic assessments yielded higher continuous loneliness scores than the pre-pandemic assessments ($SMD = 0.27$ [95% CI: 0.14-0.40]) and prevalence rates ($\log OR = 0.33$ [95% CI: 0.04-0.62]). Based on the examination of the studentized residuals, robustness analyses revealed that there was no indication of outliers and according to the Cook's distances, none of the studies were overly influential.

Sensitivity analyses

The sensitivity pooled effect estimates for the primary outcome of loneliness are displayed in Table 2 (for a visual depiction, see Suppl. Material III). The main findings of the longitudinal studies were robust against results from 14 studies with serious RoB (SMD = 0.41 [95% CI: 0.11-0.71]), two studies with clinical populations (SMD = 0.26 [95% CI: 0.12-0.40]), six studies with pseudo-longitudinal designs (SMD = 0.30 [95% CI: 0.17-0.42]), and two studies whose pre-pandemic assessment period overlapped with the pre-specified date cut-offs (SMD = 0.27 [95% CI: 0.14-0.39]).

Risk of bias

Detailed RoB ratings are displayed in Suppl. Material V. Most studies had a serious overall RoB. For ten studies (seven of which were included in the main analyses), RoB was rated as moderate. In summary, there was a substantial number of studies with high RoB due to confounding, whereas bias due to selective reporting of results (including effect estimates) was rare. The funnel plots (Figure 4) highlight RoB across studies (publication bias). Neither the rank correlation nor the regression tests indicated any funnel plot asymmetry for the continuous loneliness scores ($Z = 0.205$, $p = .238$ and bias = 0.311, $p = .756$) or prevalence values ($Z = 0.236$, $p = .813$ and Kendall's Tau = 0.286, $p = .399$).

Additional Analysis: Meta-Regression

Results from the supplemental meta-regression analyses are reported in Suppl. Material VI. The sample mean age, studies' overall RoB, and the type of study population non-significantly reduced the heterogeneity of the effect size estimators for loneliness. In the final model (21 studies, $R^2 = .29$), overall RoB rating ($B = -0.35$ [-0.64, -0.07]) was the only significant predictor, indicating that an overall lower RoB was associated with smaller effect sizes.

Discussion

The main aim of this study was to summarize the most recent high-quality evidence for changes in loneliness in association with the COVID-19 pandemic in a systematic and rigorous way. The statistical synthesis focused on longitudinal study designs. The robustness of the results was tested and predictors of change in loneliness were also explored. Based on the pooled effect sizes of 19 studies, an overall increase in loneliness since the start of the pandemic (SMD = 0.27 [0.14-0.40] for continuous measures) was found. This constitutes a small (Cohen, 1992; Ferguson, 2009) effect,

which was also heterogeneous. An exploratory meta-regression was modeled to statistically explain the observed variation.

The confidence in the finding that there has been an increase in loneliness – albeit small – during the pandemic is strengthened by the results of the sensitivity analyses, the inclusion of only high-quality and longitudinal research in the meta-analyses, the relatively large number of studies with a pooled sample of 45,734 participants, and the lack of any indication of publication bias.

A previous rapid review and meta-analysis (Prati & Mancini, 2021) reported small increases in mental distress (overall $g = 0.17$) based on longitudinal studies. It also included three studies concerning loneliness conducted in spring 2020 (Luchetti et al., 2020; Niedzwiedz et al., 2021; Tull et al., 2020), only one of which (Niedzwiedz et al., 2021) could be included in the main analyses of this review (another one (Luchetti et al., 2020) was included in a sensitivity analysis). Their synthesis showed no statistically significant change in loneliness ($g = 0.12$, $p = .34$). The present study expands on this rapid review by including more original studies from different countries with assessments later in the pandemic.

Another recent systematic review (Buecker & Horstmann, 2021), which did not synthesize its findings meta-analytically, reported based on 12 studies (three of which were included in this review (Bu et al., 2020; Heidinger & Richter, 2020; van Tilburg et al., 2020)) that most longitudinal investigations found increases in loneliness during the pandemic, which corresponds to the present findings. Studies showing decreasing loneliness had overwhelmingly relied on pre-pandemic assessments conducted shortly before the implementation of physical distancing, while those with comparison data from months or years before the pandemic had observed increased loneliness during the pandemic.

The present study extends previous knowledge on changes in loneliness during the pandemic; however, the observed increase needs to be interpreted with caution: On the one hand, loneliness can be considered a normal, non-pathological reaction to changing circumstances and many people experience it at some point in their lives. On the other hand, previous research has shown that particularly sustained or chronic loneliness jeopardizes mental and physical health (Cacioppo et al.,

2015; National Academies of Science, 2020), and the ongoing pandemic and associated restrictions could compromise lonely individuals' efforts to reconnect with others (Qualter et al., 2015).

Furthermore, the overall pooled effect in this study was small and the effect sizes reported by the individual studies were heterogeneous. The numerical values of effect size indices often provide limited understanding of the real-world significance of those effects, as even statistically small effects can be of high importance (e.g., Meyer et al., 2001). Interestingly, the most rigorous analysis (the sensitivity analyses that included only longitudinal study designs and studies with moderate RoB) showed a larger pooled effect size than the main analyses. This mirrors findings of the meta-regression, in which studies' higher RoB was negatively associated with the observed effect sizes. Taken together, these results suggest that the pooled effect in the present study might underestimate effects in at-risk populations.

The heterogeneity of effects might stem from the diversity of study characteristics included in prior research (e.g., age groups, healthy and clinical populations, regions, study designs, and loneliness measures). However, the fact that the meta-regression accounted for less than a third of observed variance suggests that other factors may influence the different trajectories of loneliness in the pandemic context. As some original studies failed to report on previously identified vulnerable groups (e.g., individuals living alone), these could not be tested as predictors. Hence, more high-quality studies that assess risk and protective factors are needed so that their relevance can be assessed across samples. This is an important step to inform targeted prevention efforts.

The meta-regression identified age, clinical populations, and studies' overall RoB as predictors of increases in loneliness, but only overall RoB had statistically significant effects. However, the analysis might have been underpowered as it was not possible to test all predictors of interest simultaneously. While neither of two other available reviews conducted a meta-regression to explore characteristics associated with changes in loneliness (Buecker & Horstmann, 2021; Prati & Mancini, 2021), Prati and Mancini (2021) explored, using meta-regression, predictors of increases in mental health symptoms during the pandemic. They found no effects of mean age, gender, or study design, either. More research is needed to better understand the mechanisms underlying observed changes in loneliness. They could include response biases such as social desirability or the perceived

de-stigmatization of loneliness: learning that loneliness is an experience shared by many during the pandemic might make it easier to acknowledge and disclose one's social needs.

Another question that should be addressed is whether changes in loneliness are primarily driven by changes in perceived relationship quality or quantity, and if this differs according to individual characteristics or in subpopulations (e.g., age groups). As a consequence, efforts aimed at preventing or reducing loneliness could pursue different strategies. For example, individuals who are lonely because they are socially isolated and have few contacts might benefit from programs fostering exchange, ideally across different living contexts and between generations. Previous research has shown positive effects of interventions enhancing social support (such as buddy-care programs) (Masi et al., 2011). Within the pandemic context, these types of interventions could be carried out digitally or within small "social-support-bubbles". Others might not feel that they have too few contacts overall, but instead be dissatisfied with their close relationships. Research has shown that people in conflictual relationships feel lonelier than those who perceive their relationships as supportive (Hsieh & Hawkley, 2018; Selcuk & Ong, 2013). As the pandemic implicates a myriad of stressors affecting relationships, interventions could target the quality of partner relationships, parent-child relationships, or other configurations in which people live together, e.g., through better communication (about feelings and worries, needs for support, etc.). Further approaches at the individual level might also focus on strategies to modify maladaptive social cognitions (which Masi et al. (2011) found to be the most effective). As individuals differ with respect to their ability to adapt to new situations, some might benefit from interventions aimed at changing attitudes and expectations regarding social contacts during a pandemic (e.g., regarding availability, spontaneity, and modality).

In general, prevention and intervention programs should address particularly vulnerable groups such as older individuals without internet access. Concerns have been raised about their lack of representation in large-scale, longitudinal investigations of loneliness (Dahlberg, 2021), so care must be taken to ensure that preventive measures address the needs and reach the breadth of the population instead of focusing on those who are most likely to be research participants. It should also be a research desideratum to include the most hard-to-reach members of the community.

Strengths and Limitations Including Constraints on Generality

The present study synthesized substantially more original reports than previous rapid and systematic reviews. The meta-analyses' focus on longitudinal study designs is another strength. Besides peer-reviewed publications, this review included studies identified via other sources, e.g., preprint servers (but no unpublished studies). In addition to longitudinal studies, pseudo-longitudinal studies were included in the narrative synthesis and in the exploratory meta-regression. However, the informative value of the meta-regression was still hampered by the limited number of predictors that could be tested on the basis of the available studies (which also necessitated a stepwise procedure).

The lack of control samples unaffected by the pandemic weakens possible causal inference, making it more difficult to attribute the increase in loneliness to the pandemic. Furthermore, an alternative explanation for increases in loneliness in the population was recently provided by Buecker et al. (2021) who reported linear increases in emerging adults over the last decades. The discussion of underlying period and/or cohort effects included more flexible social (including romantic) relationships, use of communication technology, and occupational instability. At the same time, some of these trends resulting in individuals having many, but weak social ties may have particularly come into effect in the pandemic context.

Risk of bias assessments revealed that most original reports had a serious risk of bias in at least one domain, e.g., regarding the measurement of loneliness (including the use of untested single items or adaptations of questionnaires originally intended to measure other constructs). Although sensitivity analyses supported the results' robustness with respect to studies' overall risk of bias, the meta-regression suggested that it could have led to an underestimation of the magnitude of changes in loneliness.

Further, some variables could only be included in the analyses in ways that reduced the complexity of original study designs/dynamic situations: First, the duration between loneliness assessments was often a range and not a concrete number of days/months. The present analyses used the respective midpoint of this range. For the duration of pandemic-related restrictions, the same procedure was employed. Restriction measures were coded based on official mandates, however, this might have been imprecise if measures differed between regions and/or if the assessment spanned a period in which these rules changed. There was also little information available regarding participants'

adherence to restrictions. Thus, in summary, the study design was not suited to determine effects of (specific) restrictions on loneliness. Furthermore, as the pandemic progressed differently around the world, we used regional cut-offs to distinguish whether study assessments had taken place before or during the pandemic, but individuals might also have been affected by restrictions outside their place of residence (e.g., travel bans). However, a sensitivity analysis confirmed the results' robustness regarding findings of studies whose "pre-pandemic"-assessment overlapped with the introduced cut-offs.

As included studies mainly derived from the US and Europe, whereas South America, Asia/Oceania, and Africa were underrepresented, the present findings might not be generalizable to populations not conforming to the WEIRD (Western, educated, industrialized, rich and democratic) stereotype (Henrich et al., 2010). Further, the original investigations might have omitted specific groups, such as immigrants not speaking the country's official language, people with mental and/or physical disabilities, and those without regular internet access, if conducted online.

Conclusion

The present study summarizes the recent research on changes in loneliness since the start of the COVID-19 pandemic. The synthesis of longitudinal studies indicates increases in loneliness. However, observed effects were small and heterogeneous, suggesting that at this point in time, concerns about a "loneliness pandemic" are likely overblown. However, as loneliness constitutes a risk for premature mortality and mental and physical health, it should be closely monitored, ideally in combination with potential risk and protective factors and health outcomes to derive appropriate interventions.

References

- Bartrés-Faz, D., Macià, D., Cattaneo, G., Borràs, R., Tarrero, C., Solana, J., Tormos, J. M., & Pascual-Leone, A. (2021). The paradoxical effect of COVID-19 outbreak on loneliness. *BJPsych Open*, 7(1). <https://doi.org/10.1192/bjo.2020.163>
- Beutel, M. E., Hettich, N., Ernst, M., Schmutzer, G., Tibubos, A. N., & Braehler, E. (2021). Mental health and loneliness in the German general population during the COVID-19 pandemic compared to a representative pre-pandemic assessment. *Scientific Reports*, 11(1). <https://doi.org/10.1038/s41598-021-94434-8>
- Bierman, A., & Schieman, S. (2020). Social Estrangement and Psychological Distress before and during the COVID-19 Pandemic: Patterns of Change in Canadian Workers. *Journal of Health and Social Behavior*, 61(4), 398-417. <https://doi.org/10.1177/0022146520970190>
- Bramer, W. M., Giustini, D., de Jonge, G. B., Holland, L., & Bekhuis, T. (2016). De-duplication of database search results for systematic reviews in EndNote. *Journal of the Medical Library Association*, 104(3), 240-243. <https://doi.org/10.3163/1536-5050.104.3.014>
- Bu, F., Steptoe, A., & Fancourt, D. (2020). Who is lonely in lockdown? Cross-cohort analyses of predictors of loneliness before and during the COVID-19 pandemic. *Public Health*, 186, 31-34. <https://doi.org/10.1016/j.puhe.2020.06.036>
- Buecker, S., & Horstmann, K. T. (2021). Loneliness and social isolation during the COVID-19 pandemic: A systematic review enriched with empirical evidence from a large-scale diary study. *European Psychologist*, 26(4), 272-284. <http://dx.doi.org/10.1027/1016-9040/a000453>
- Buecker, S., Mund, M., Chwastek, S., Sostmann, M., & Luhmann, M. (2021). Is loneliness in emerging adults increasing over time? A preregistered cross-temporal meta-analysis and systematic review. *Psychological Bulletin*, 147(8), 787-805. <https://doi.org/10.1037/bul0000332>
- Cacioppo, J. T., Cacioppo, S., & Boomsma, D. I. (2014). Evolutionary mechanisms for loneliness. *Cognition and Emotion*, 28(1), 3-21. <https://doi.org/10.1080/02699931.2013.837379>

- Cacioppo, S., Grippo, A. J., London, S., Goossens, L., & Cacioppo, J. T. (2015). Loneliness: clinical import and interventions. *Perspectives on Psychological Science*, 10(2), 238-249.
<https://doi.org/10.1177/1745691615570616>
- Cochrane Handbook for Systematic Reviews of Interventions version 6.2. (2021). (J. P. T. Higgins, J. Thomas, J. Chandler, M. Cumpston, T. Li, M. J. Page, & V. A. Welch, Eds.). Cochrane.
www.training.cochrane.org/handbook
- Cohen, J. (1992). A power primer. *Psychological Bulletin*, 112(1), 155-159.
<https://www.ncbi.nlm.nih.gov/pubmed/19565683>
- Dahlberg, L. (2021). Loneliness during the COVID-19 pandemic. *Aging & Mental Health*, 1-4.
<https://doi.org/10.1080/13607863.2021.1875195>
- Elmer, T., Mepham, K., & Stadtfeld, C. (2020). Students under lockdown: Comparisons of students' social networks and mental health before and during the COVID-19 crisis in Switzerland. *PLoS One*, 15(7). <https://doi.org/10.1371/journal.pone.0236337>
- Entringer, T. M., & Gosling, S. D. (2021). Loneliness During a Nationwide Lockdown and the Moderating Effect of Extroversion. *Social Psychological and Personality Science*, 19485506211037871.
- Entringer, T. M., Kröger, H., Schupp, J., Kühne, S., Liebig, S., Goebel, J., Grabka, M. M., Graeber, D., Kroh, M., & Schröder, C. (2020). *Psychische Krise durch Covid-19? Sorgen sinken, Einsamkeit steigt, Lebenszufriedenheit bleibt stabil*. SOEPpapers on Multidisciplinary Panel Data Research. Vol 1087. Berlin: Deutsches Institut für Wirtschaftsforschung (DIW).
- Ernst, M. (2022, March 19). Materials for: Loneliness Before and During the COVID-19 Pandemic: A Systematic Review with Meta-Analysis. Retrieved from osf.io/fp732
- Ferguson, C. J. (2009). An effect size primer: A guide for clinicians and researchers. *Professional Psychology: Research and Practice*, 40(5), 532.
- Fried, L., Prohaska, T., Burholt, V., Burns, A., Golden, J., Hawkey, L., Lawlor, B., Leavey, G., Lubben, J., O'Sullivan, R., Perissinotto, C., van Tilburg, T., Tully, M., & Victor, C. (2020). A unified approach to loneliness. *Lancet*, 395(10218), 114. [https://doi.org/10.1016/S0140-6736\(19\)32533-4](https://doi.org/10.1016/S0140-6736(19)32533-4)

- Gallagher, S., Bennett, K. M., & Roper, L. (2020). Loneliness and depression in patients with cancer during COVID-19. *Journal of Psychosocial Oncology*, 1-7.
<https://doi.org/10.1080/07347332.2020.1853653>
- Gallagher, S., & Wetherell, M. A. (2020). Risk of depression in family caregivers: unintended consequence of COVID-19. *BJPsych Open*, 6(6), e119. <https://doi.org/10.1192/bjo.2020.99>
- Gierveld, J. D. J., & Tilburg, T. V. (2006). A 6-item scale for overall, emotional, and social loneliness: Confirmatory tests on survey data. *Research on Aging*, 28(5), 582-598.
- Gierveld, J. d. J., Van Tilburg, T. G., & Dykstra, P. A. (2018). New ways of theorizing and conducting research in the field of loneliness and social isolation. In A. L. Vangelisti & D. Perlman (Eds.), *Cambridge Handbook of Personal Relationships, 2nd revised edition*. Cambridge University Press.
- Gruber, J., Prinstein, M. J., Clark, L. A., Rottenberg, J., Abramowitz, J. S., Albano, A. M., Aldao, A., Borelli, J. L., Chung, T., Davila, J., Forbes, E. E., Gee, D. G., Hall, G. C. N., Hallion, L. S., Hinshaw, S. P., Hofmann, S. G., Hollon, S. D., Joormann, J., Kazdin, A. E., Klein, D. N., La Greca, A. M., Levenson, R. W., MacDonald, A. W., McKay, D., McLaughlin, K. A., Mendle, J., Miller, A. B., Neblett, E. W., Nock, M., Olatunji, B. O., Persons, J. B., Rozek, D. C., Schleider, J. L., Slavich, G. M., Teachman, B. A., Vine, V., & Weinstock, L. M. (2021). Mental health and clinical psychological science in the time of COVID-19: Challenges, opportunities, and a call to action. *American Psychologist*, 76(3), 409-426.
<https://doi.org/10.1037/amp0000707>
- Heidinger, T., & Richter, L. (2020). The Effect of COVID-19 on Loneliness in the Elderly. An Empirical Comparison of Pre-and Peri-Pandemic Loneliness in Community-Dwelling Elderly. *Frontiers in Psychology*, 11, 585308. <https://doi.org/10.3389/fpsyg.2020.585308>
- Henrich, J., Heine, S. J., & Norenzayan, A. (2010). The weirdest people in the world? *Behavioral and Brain Sciences*, 33(2-3), 61-83; discussion 83-135.
<https://doi.org/10.1017/S0140525X0999152X>
- Herrera, M. S., Elgueta, R., Fernández, M. B., Giacoman, C., Leal, D., Marshall, P., Rubio, M., & Bustamante, F. (2021). A longitudinal study monitoring the quality of life in a national cohort

- of older adults in Chile before and during the COVID-19 outbreak. *BMC Geriatrics*, 21(1), 143. <https://doi.org/10.1186/s12877-021-02110-3>
- Holt-Lunstad, J. (2021). A pandemic of social isolation? *World Psychiatry*, 20(1), 55-56. <https://doi.org/10.1002/wps.20839>
- Holt-Lunstad, J., Smith, T. B., Baker, M., Harris, T., & Stephenson, D. (2015). Loneliness and social isolation as risk factors for mortality: a meta-analytic review. *Perspectives on Psychological Science*, 10(2), 227-237. <https://doi.org/10.1177/1745691614568352>
- Hsieh, N., & Hawkley, L. (2018). Loneliness in the older adult marriage: Associations with dyadic aversion, indifference, and ambivalence. *Journal of Social and Personal Relationships*, 35(10), 1319-1339. <https://doi.org/10.1177/0265407517712480>
- Hughes, M. E., Waite, L. J., Hawkley, L. C., & Cacioppo, J. T. (2004). A Short Scale for Measuring Loneliness in Large Surveys: Results From Two Population-Based Studies. *Research on Aging*, 26(6), 655-672. <https://doi.org/10.1177/0164027504268574>
- Huxhold, O., & Tesch-Römer, C. (2021). Einsamkeit steigt in der Corona-Pandemie bei Menschen im mittleren und hohen Erwachsenenalter gleichermaßen deutlich. In: dza aktuell, H. 4
- Killgore, W. D. S., Cloonan, S. A., Taylor, E. C., & Dailey, N. S. (2020). Loneliness: A signature mental health concern in the era of COVID-19. *Psychiatry Research*, 290, 113117. <https://doi.org/10.1016/j.psychres.2020.113117>
- Kivi, M., Hansson, I., & Bjälkebring, P. (2021). Up and About: Older Adults' Well-being During the COVID-19 Pandemic in a Swedish Longitudinal Study. *The Journals of Gerontology: Series B*, 76(2), e4-e9. <https://doi.org/10.1093/geronb/gbaa084>
- Kovacs, B., Caplan, N., Grob, S., & King, M. (2021). Social Networks and Loneliness During the COVID-19 Pandemic. *Socius: Sociological Research for a Dynamic World*, 7, 237802312098525. <https://doi.org/10.1177/2378023120985254>
- Krendl, A. C., & Perry, B. L. (2021). The Impact of Sheltering in Place During the COVID-19 Pandemic on Older Adults' Social and Mental Well-Being. *The Journals of Gerontology: Series B*, 76(2), e53-e58. <https://doi.org/10.1093/geronb/gbaa110>

- Lau, J. F., Shariff, R., & Meehan, A. (2021). Are biased interpretations of ambiguous social and non-social situations a precursor, consequence or maintenance factor of youth loneliness? *Behaviour Research and Therapy*, 140, 103829. <https://doi.org/10.1016/j.brat.2021.103829>
- Leigh-Hunt, N., Bagguley, D., Bash, K., Turner, V., Turnbull, S., Valtorta, N., & Caan, W. (2017). An overview of systematic reviews on the public health consequences of social isolation and loneliness. *Public Health*, 152, 157-171. <https://doi.org/10.1016/j.puhe.2017.07.035>
- Lim, M. H., Eres, R., & Vasan, S. (2020). Understanding loneliness in the twenty-first century: an update on correlates, risk factors, and potential solutions. *Social Psychiatry and Psychiatric Epidemiology*, 55(7), 793-810. <https://doi.org/10.1007/s00127-020-01889-7>
- Lippke, S., Fischer, M. A., & Ratz, T. (2021). Physical Activity, Loneliness, and Meaning of Friendship in Young Individuals - A Mixed-Methods Investigation Prior to and During the COVID-19 Pandemic With Three Cross-Sectional Studies. *Frontiers in Psychology*, 12, 617267. <https://doi.org/10.3389/fpsyg.2021.617267>
- Luchetti, M., Lee, J. H., Aschwanden, D., Sesker, A., Strickhouser, J. E., Terracciano, A., & Sutin, A. R. (2020). The trajectory of loneliness in response to COVID-19. *American Psychologist*, 75(7), 897-908. <https://doi.org/10.1037/amp0000690>
- Macdonald, B., & Hülür, G. (2021). Well-Being and Loneliness in Swiss Older Adults During the COVID-19 Pandemic: The Role of Social Relationships. *Gerontologist*, 61(2), 240-250. <https://doi.org/10.1093/geront/gnaa194>
- Masi, C. M., Chen, H. Y., Hawkey, L. C., & Cacioppo, J. T. (2011). A meta-analysis of interventions to reduce loneliness. *Personality and Social Psychology Review*, 15(3), 219-266. <https://doi.org/10.1177/1088868310377394>
- McGrath, A., Murphy, N., & Richardson, N. (2020). The impact of the COVID-19 pandemic on the wellbeing of Irish Men's Shed members. *Health Promotion International*. <https://doi.org/10.1093/heapro/daaa113>
- Meyer, G. J., Finn, S. E., Eyde, L. D., Kay, G. G., Moreland, K. L., Dies, R. R., Eisman, E. J., Kubiszyn, T. W., & Reed, G. M. (2001). Psychological testing and psychological assessment: A review of evidence and issues. *American Psychologist*, 56(2), 128.

- Mueller, M. K., Richer, A. M., Callina, K. S., & Charmaraman, L. (2021). Companion Animal Relationships and Adolescent Loneliness during COVID-19. *Animals (Basel)*, 11(3).
<https://doi.org/10.3390/ani11030885>
- Mund, M., Freuding, M. M., Möbius, K., Horn, N., & Neyer, F. J. (2020). The stability and change of loneliness across the life span: A meta-analysis of longitudinal studies. *Personality and Social Psychology Review*, 24(1), 24-52.
- National Academies of Science, Engineering, and Medicine,. (2020). *Social Isolation and Loneliness in Older Adults: Opportunities for the Health Care System*. National Academies Press.
- Niedzwiedz, C. L., Green, M. J., Benzeval, M., Campbell, D., Craig, P., Demou, E., Leyland, A., Pearce, A., Thomson, R., Whitley, E., & Katikireddi, S. V. (2021). Mental health and health behaviours before and during the initial phase of the COVID-19 lockdown: longitudinal analyses of the UK Household Longitudinal Study. *Journal of Epidemiology and Community Health*, 75(3), 224-231. <https://doi.org/10.1136/jech-2020-215060>
- Okely, J. A., Corley, J., Welstead, M., Taylor, A. M., Page, D., Skarabela, B., Redmond, P., Cox, S. R., & Russ, T. C. (2020). Change in Physical Activity, Sleep Quality, and Psychosocial Variables during COVID-19 Lockdown: Evidence from the Lothian Birth Cohort 1936. *International Journal of Environmental Research and Public Health*, 18(1).
<https://doi.org/10.3390/ijerph18010210>
- Page, M. J., McKenzie, J. E., Bossuyt, P. M., Boutron, I., Hoffmann, T. C., Mulrow, C. D., Shamseer, L., Tetzlaff, J. M., Akl, E. A., Brennan, S. E., Chou, R., Glanville, J., Grimshaw, J. M., Hrobjartsson, A., Lalu, M. M., Li, T., Loder, E. W., Mayo-Wilson, E., McDonald, S., McGuinness, L. A., Stewart, L. A., Thomas, J., Tricco, A. C., Welch, V. A., Whiting, P., & Moher, D. (2021). The PRISMA 2020 statement: an updated guideline for reporting systematic reviews. *Bmj*, 372, n71. <https://doi.org/10.1136/bmj.n71>
- Pan, K. Y., Kok, A. A. L., Eikelenboom, M., Horsfall, M., Jörg, F., Luteijn, R. A., Rhebergen, D., Oppen, P. V., Giltay, E. J., & Penninx, B. (2021). The mental health impact of the COVID-19 pandemic on people with and without depressive, anxiety, or obsessive-compulsive disorders:

- a longitudinal study of three Dutch case-control cohorts. *Lancet Psychiatry*, 8(2), 121-129.
[https://doi.org/10.1016/s2215-0366\(20\)30491-0](https://doi.org/10.1016/s2215-0366(20)30491-0)
- Peng, S., & Roth, A. R. (2021). Social isolation and loneliness before and during the COVID-19 pandemic: a longitudinal study of US Adults over 50. *The Journals of Gerontology: Series B*.
<https://doi.org/10.1093/geronb/gbab068>
- Perlman, D., & Peplau, L. A. (1981). Toward a social psychology of loneliness. In R. Gilmour & S. Duck (Eds.), *Personal Relationships* (Vol. 3, pp. 31-56). Academic Press.
- Philpot, L. M., Ramar, P., Roellinger, D. L., Barry, B. A., Sharma, P., & Ebbert, J. O. (2021). Changes in social relationships during an initial "stay-at-home" phase of the COVID-19 pandemic: A longitudinal survey study in the U.S. *Social Science & Medicine*, 274, 113779.
<https://doi.org/10.1016/j.socscimed.2021.113779>
- Plümper, T., & Neumayer, E. (2020). Lockdown policies and the dynamics of the first wave of the Sars-CoV-2 pandemic in Europe. *Journal of European Public Policy*, 1-21.
<https://doi.org/10.1080/13501763.2020.1847170>
- Prati, G., & Mancini, A. D. (2021). The psychological impact of COVID-19 pandemic lockdowns: a review and meta-analysis of longitudinal studies and natural experiments. *Psychological Medicine*, 51(2), 201-211. <https://doi.org/10.1017/s0033291721000015>
- Qualter, P., Vanhalst, J., Harris, R., Van Roekel, E., Lodder, G., Bangee, M., Maes, M., & Verhagen, M. (2015). Loneliness Across the Life Span. *Perspectives on Psychological Science*, 10(2), 250-264. <https://doi.org/10.1177/1745691615568999>
- Rogers, A. A., Ha, T., & Ockey, S. (2021). Adolescents' Perceived Socio-Emotional Impact of COVID-19 and Implications for Mental Health: Results From a U.S.-Based Mixed-Methods Study. *Journal of Adolescent Health*, 68(1), 43-52.
<https://doi.org/10.1016/j.jadohealth.2020.09.039>
- Russell, D., Peplau, L. A., & Cutrona, C. E. (1980). The revised UCLA Loneliness Scale: concurrent and discriminant validity evidence. *Journal of Personality and Social Psychology*, 39(3), 472.
- Selcuk, E., & Ong, A. D. (2013). Perceived partner responsiveness moderates the association between received emotional support and all-cause mortality. *Health Psychology*, 32(2), 231.

- Sibley, C. G., Greaves, L. M., Satherley, N., Wilson, M. S., Overall, N. C., Lee, C. H. J., Milojev, P., Bulbulia, J., Osborne, D., Milfont, T. L., Houkamau, C. A., Duck, I. M., Vickers-Jones, R., & Barlow, F. K. (2020). Effects of the COVID-19 Pandemic and Nationwide Lockdown on Trust, Attitudes Toward Government, and Well-Being. *American Psychologist*, 75(5), 618-630. <https://doi.org/10.1037/amp0000662>
- Step toe, A., & Di Gessa, G. (2021). Mental health and social interactions of older people with physical disabilities in England during the COVID-19 pandemic: a longitudinal cohort study. *Lancet Public Health*. [https://doi.org/10.1016/s2468-2667\(21\)00069-4](https://doi.org/10.1016/s2468-2667(21)00069-4)
- Step toe, A., Shankar, A., Demakakos, P., & Wardle, J. (2013). Social isolation, loneliness, and all-cause mortality in older men and women. *Proceedings of the National Academy of Sciences*, 110(15), 5797-5801. <https://doi.org/10.1073/pnas.1219686110>
- Stolz, E., Mayerl, H., & Freidl, W. (2021). The impact of COVID-19 restriction measures on loneliness among older adults in Austria. *European Journal of Public Health*, 31(1), 44-49. <https://doi.org/10.1093/eurpub/ckaa238>
- Stone, L. (2020, 23.09.2020). *Loneliness during the COVID-19 pandemic*. Institute for Family Studies. Retrieved 02.07.2021 from <https://ifstudies.org/blog/loneliness-during-the-covid-19-pandemic>
- Sutin, A. R., Luchetti, M., & Terracciano, A. (2020). Has loneliness increased during COVID-19? Comment on "Loneliness: A signature mental health concern in the era of COVID-19". *Psychiatry Research*, 291, 113295. <https://doi.org/10.1016/j.psychres.2020.113295>
- Tanskanen, J., & Anttila, T. (2016). A Prospective Study of Social Isolation, Loneliness, and Mortality in Finland. *American Journal of Public Health*, 106(11), 2042-2048. <https://doi.org/10.2105/AJPH.2016.303431>
- Tull, M. T., Edmonds, K. A., Scamaldo, K. M., Richmond, J. R., Rose, J. P., & Gratz, K. L. (2020). Psychological Outcomes Associated with Stay-at-Home Orders and the Perceived Impact of COVID-19 on Daily Life. *Psychiatry Research*, 289, 113098. <https://doi.org/10.1016/j.psychres.2020.113098>

van der Velden, P. G., Hyland, P., Contino, C., von Gaudecker, H. M., Muffels, R., & Das, M. (2021).

Anxiety and depression symptoms, the recovery from symptoms, and loneliness before and after the COVID-19 outbreak among the general population: Findings from a Dutch population-based longitudinal study. *PLoS One*, *16*(1), e0245057.

<https://doi.org/10.1371/journal.pone.0245057>

van Tilburg, T. G., Steinmetz, S., Stolte, E., van der Roest, H., & de Vries, D. H. (2020). Loneliness

and mental health during the COVID-19 pandemic: A study among Dutch older adults. *The Journals of Gerontology: Series B*. <https://doi.org/10.1093/geronb/gbaa111>

Werner, A. M., Tibubos, A. N., Mulder, L. M., Reichel, J. L., Schafer, M., Heller, S., Pfirrmann, D.,

Edelmann, D., Dietz, P., Rigotti, T., & Beutel, M. E. (2021). The impact of lockdown stress and loneliness during the COVID-19 pandemic on mental health among university students in Germany. *Scientific Reports*, *11*(1), 22637. <https://doi.org/10.1038/s41598-021-02024-5>

Wong, S. Y. S., Zhang, D., Sit, R. W. S., Yip, B. H. K., Chung, R. Y., Wong, C. K. M., Chan, D. C.

C., Sun, W., Kwok, K. O., & Mercer, S. W. (2020). Impact of COVID-19 on loneliness, mental health, and health service utilisation: a prospective cohort study of older adults with multimorbidity in primary care. *British Journal of General Practice*, *70*(700), e817-e824.

<https://doi.org/10.3399/bjgp20X713021>

Table 1

Studies Reporting About Loneliness Before and During the Pandemic Meeting Inclusion Criteria of the Systematic Review

[illegible]

[illegible]

[illegible]

Authors and country/region	Population	Sample (N) ^b	Study type	Age (M; SD if available) ^b	Women (%) ^b	Loneliness measure	Loneliness continuous pre- vs. during-pandemic (M, SD)	Loneliness prevalence pre- vs. during-pandemic (%)	Reported changes in loneliness	Months between before- and during-pandemic assessment	Current extent, duration (days) of restrictions at during-pandemic assessment
Kovacs et al. (2021) USA	General public (university research participant pool)	189	Longitudinal	27.6	38	20-item UCLA loneliness scale	2.69 (0.49) vs. 2.82 (0.38)	n/a	↑	12	Soft 78 (63-92)
Krendl and Perry (2021) USA	Older adults (previously participants in lab experiment)	93	Longitudinal	75.2 (6.86)	54.3	UCLA 3-item loneliness scale	5.14 (2.49) vs. 6.05 (2.83)	n/a	↑	9	Soft 43 (28-58)
Lau et al. (2021) England	University students	97; 99	Longitudinal	21	50; 35.4	20 item UCLA loneliness scale	42.11 (10.06) vs. 42.98 (9.87)	n/a	↔	3	Hard 46 (1-90)
Lippke et al. (2021) ^a Germany	University students	363; 175	Pseudo-longitudinal	19.33 (2.27); 24.22 (3.61)	48.4; 47.4	Pre-pandemic: ULS-8; During-pandemic: adapted single item from CES-D	2.24 (0.67) vs. 1.95 (1.22)	n/a	n/a	22	Soft 95 (80-109)

[illegible]

Authors and country/region	Population	Sample (N) ^b	Study type	Age (M; SD if available) ^b	Women (%) ^b	Loneliness measure	Loneliness continuous pre- vs. during-pandemic (M, SD)	Loneliness prevalence pre- vs. during-pandemic (%)	Reported changes in loneliness	Months between before- and during-pandemic assessment	Current extent, duration (days) of restrictions at during-pandemic assessment
Pan et al. (2021) Netherlands	General public with/without mental illness (case-control cohorts)	1,517	Longitudinal	56.1 (13.2) ²	64	6-item de Jong Gierveld loneliness scale	2.04 (2.02) vs. 2.26 (1.83)	n/a	↑	70	Hard 42 (21-62)
Peng and Roth (2021) USA	Older adults (community cohort > 50 years)	1,141	Longitudinal	63.12 (7.46); 66.87 (7.46)	53	11-item scale derived from the UCLA loneliness scale	1.5 (0.45) vs. 1.5 (0.44)	n/a	↔	48	Soft 115 (74-156)
Philpot et al. (2021) USA	General public (patient register)	1,996	Longitudinal	60 (14.5)	50	NIH Adult Social Relationship Scales	1.8 (0.8) vs. 2 (0.8)	n/a	↑	15	Soft 44 (29-59)
Rogers et al. (2021) USA	Adolescents (community cohort)	407	Longitudinal	15.5	49.9	UCLA 3-item loneliness scale	1.3 (0.47) vs. 1.44 (0.53)	n/a	↑	7	Hard 20 (13-26)
Sibley et al. (2020) USA	General public (community cohort)	1,003 (each)	Pseudo-longitudinal	51.7 (13.0)	66.6; 64.9	Sense of Belonging Instrument	5.1 (1.05) vs. 5.07 (1.1)	n/a	↔	6	Hard 10 (1-19)

[illegible]

Authors and country/region	Population	Sample (N) ^b	Study type	Age (M; SD if available) ^b	Women (%) ^b	Loneliness measure	Loneliness continuous pre- vs. during-pandemic (M, SD)	Loneliness prevalence pre- vs. during-pandemic (%)	Reported changes in loneliness	Months between before- and during-pandemic assessment	Current extent, duration (days) of restrictions at during-pandemic assessment
van Tilburg et al. (2020) Netherlands	Older adults (community cohort > 65 years)	1,502	Longitudinal	72	49	6-item de Jong Gierveld loneliness scale	Social loneliness: 0.95 (1.15) vs. 1.17 (1.20) Emotional loneliness: 0.48 (0.91) vs. 0.97 (0.97)	n/a	↑	7	Hard 65 (54-76)
Werner et al. (2021)	University students	443	Longitudinal	22.8 (3.3)	77	UCLA 3-item loneliness scale	3.89 (2.73) vs. 5.89 (2.69)	n/a	↑	11	Soft 95 (81-109)
Germany Wong et al. (2020) Hong Kong	Older adults with chronic health conditions	583	Longitudinal	70.9 (6.1)	72.6	6-item de Jong Gierveld loneliness scale	1.6 (1.85) vs. 2.9 (2.46)	40.5 vs. 70.1	↑	18	Soft 67 (37-96)

Note. For ranges (i.e., with respect to assessment periods and durations of restrictions), means are reported. Cut-offs for reported prevalence rates: Gallagher et al. (2020) and Gallagher and Wetherell (2020) "often" lonely; Herrera et al. (2021): > 3; McGrath et al. (2020): >= 6; Niedzwiedz et al. (2021): "often" lonely; Steptoe and Di Gessa (2021): >= 5; Wong et al. (2020): no loneliness: 0-1, moderate loneliness: 2-4, severe loneliness: 5-6; Huxhold and Tesch-Römer (2021): Affirmation of the majority of negative statements, denial of the majority of positive statements; Stone (2020): For each item: response option "often".

N/A: not applicable.

^a These studies could not be included in the meta-analyses and -regression.

^b Report of two numbers indicates differences in pre-/during-pandemic samples

^c Age was assessed during-, not pre-pandemic

Table 2*Outcomes of the Sensitivity Analyses*

Selection criterion for inclusion in sensitivity analysis	Number of effect sizes k	SMD	95 % CI	Z	p	I^2
No 'serious' or 'critical' risk of overall bias	5	0.41	[0.11, 0.71]	2.66	< 0.001	99%
Including pseudo-longitudinal study designs	25	0.30	[0.17, 0.42]	4.71	< 0.001	99%
Including studies whose pre-pandemic assessment overlapped with the cut-offs	21	0.27	[0.14, 0.39]	4.04	< 0.001	98%
No clinical populations	17	0.26	[0.12, 0.40]	3.61	< 0.001	98%

Note. The Table displays the number of effect sizes included in the analyses, homogeneity (I^2), SMDs, their confidence intervals and corresponding Z - and p -values. CI: Confidence interval. SMD: standardized mean difference.

Figure 1

Study Selection: PRISMA 2020 Flow Diagram for Systematic Reviews Including Searches of Databases, Registers and Other Sources for the Present Study

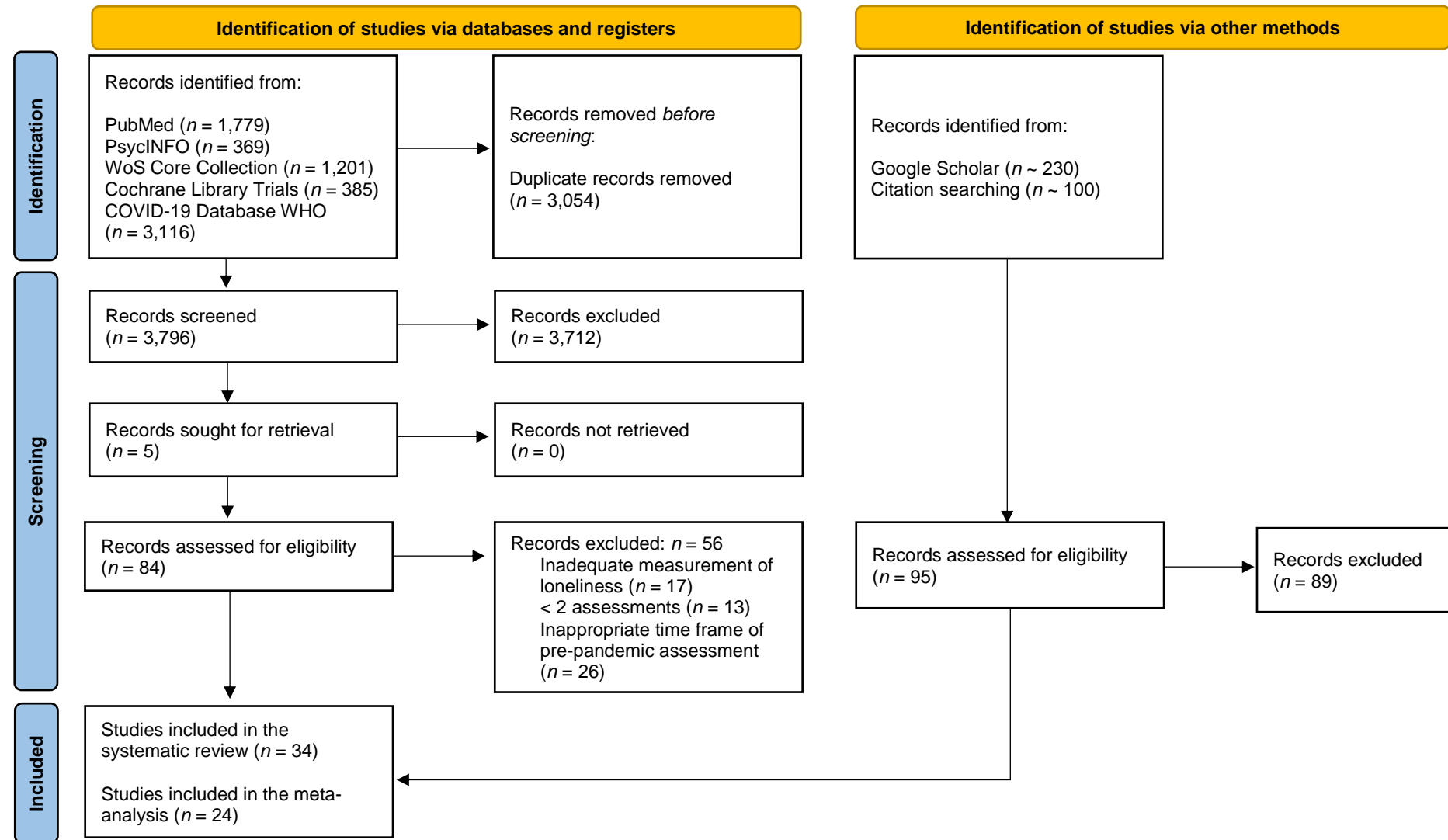
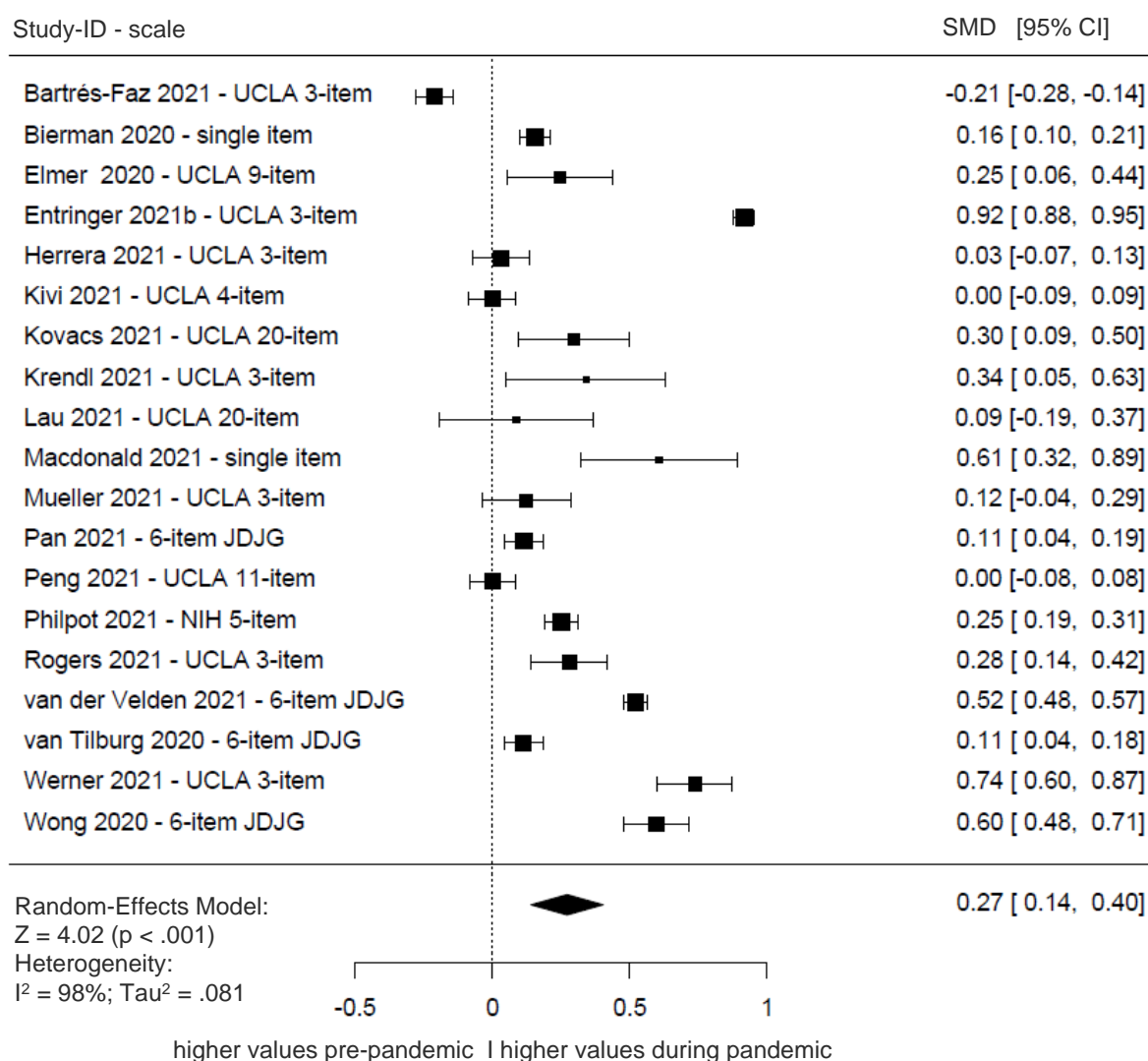
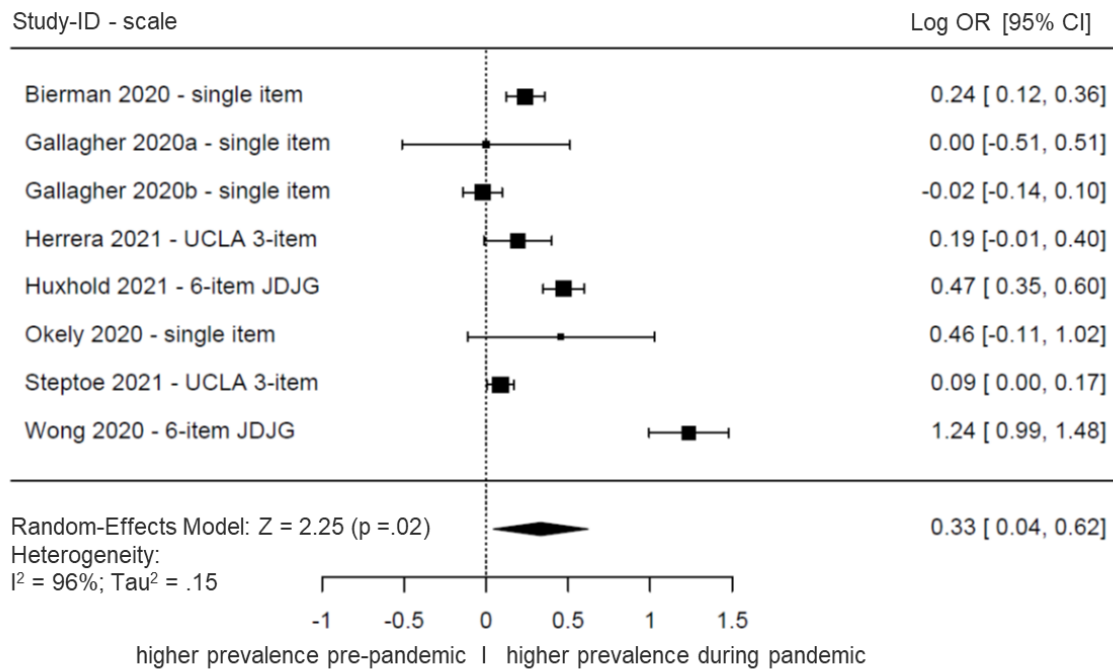
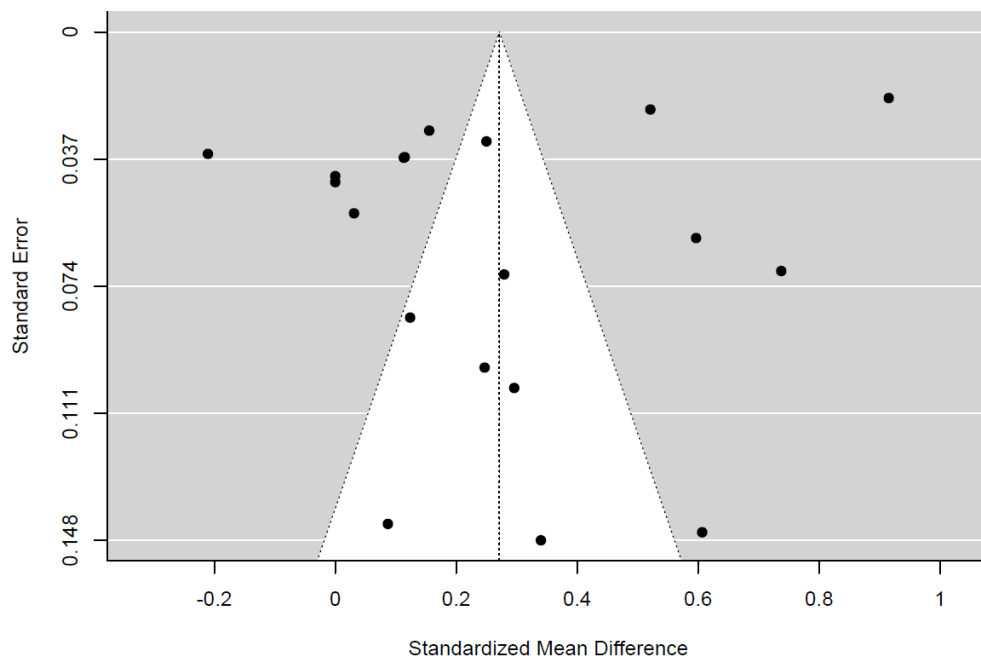
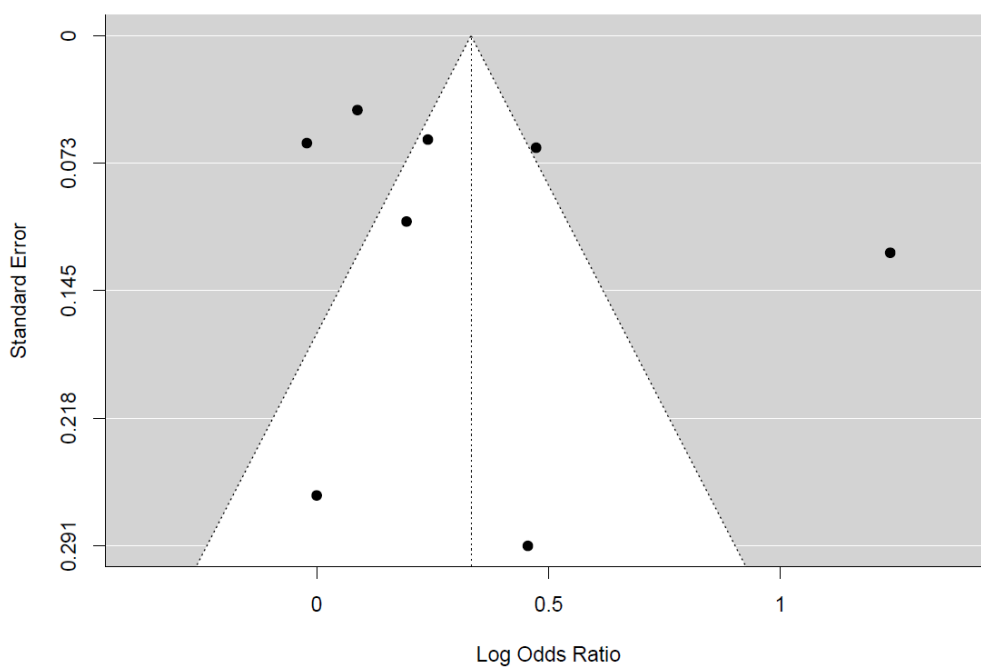


Figure 2*Forest Plot for Reports of Continuous Loneliness Values Based on Longitudinal Original Studies***Loneliness – continuous values**

Note. The plot depicts model fit, individual study and pooled effect size estimates (standardized mean differences and corresponding 95% confidence intervals). The size of the boxes corresponds to the respective studies' (inverse variance) weighting. SMD: standardized mean differences; CI: confidence interval.

Figure 3*Forest Plot for Reports of Prevalence Rates of Loneliness Based on Longitudinal Original Studies***Loneliness – prevalence**

Note. The plot depicts model fit, pooled effect size estimates (log odds ratios), and the corresponding study results and IDs. The size of the boxes corresponds to the respective studies' weighting. Log OR: log odds ratio; CI: confidence interval.

Figure 4*Funnel Plots of the Effect Size Estimators for Loneliness***Continuous values****Prevalence**

Note. The dots represent the individual studies. Standardized mean differences are plotted against standard errors.